

समुद्राची गाज अन, पक्षांचे मंजुळ स्वर,  
रम्य कोकणात असावे आपले एक घर.

# Coral Residency

Malvan



# Where your 'Dream Home' comes in to reality...

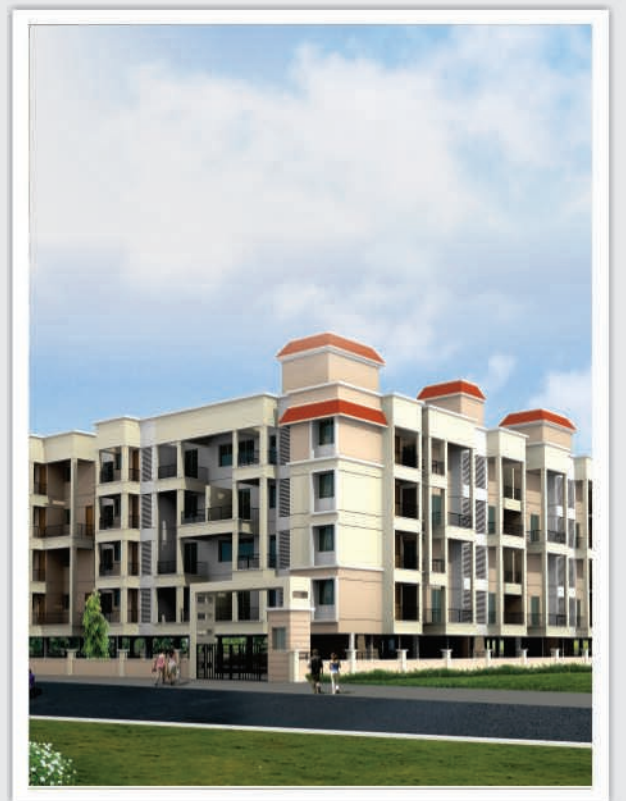
**House is made with walls & beams, but a home is made with love & dreams!**

With 20 years of experience in the Construction Industry, at **Saanvi Group** we understand the value of your dream home. To help you realize this dream we are launching a residential project '**Coral Residency**' at Malvan, a premium location famous for its white sand beaches & historical importance. The Place, features & amenities of '**Coral Residency**' will surely leave you mesmerised & provide an amazing living experience as well as a sound investment opportunity.





Artist impression Of Coral Residency





## Where is it located?

Coral Residency is located at Malvan, Sindhudurg district (Only tourism district in India). The famous Chivala beach is barely 1.5 KM from the site. Malvan is rich in flora & fauna & historicity still prevails in its culture.

## Temperature

➤ Summer : 28° C to 38° C ➤ Winter : 16° C to 25° C

## How to get here

### HIT THE ROAD

PUNE : 385 KM / KOLHAPUR : 158 KM  
MUMBAI : 546 KM / PANAJIM : 107 KM

### TAKE A BUS

MSRCT operates deluxe & express buses from Malvan bus depot to all important cities in the state.

### CUT THROUGH THE CLOUDS

Fly out from Dabolim (Goa) airport which is 136 KM away

### HOP ON A TRAIN

You can catch a train from Kudal or Sindhunagari (Oras) which is 32 KM away

### Sindhudurg fort



### Kunkeshwar (Temple)



### Tarkarli (Beach)



### Devbagh (Beach)

### Rock Garden



### Scuba diving



- 🌴 **Situated in Sindhudurg a declared tourism district.**
- 🌴 **Near to Shri Rameshwar Temple Achara, Shri Bharadi devi Temple Anganewadi & Lord Shiva Temple Kunkeshwar.**
- 🌴 **Very close to famous exotic white sand beaches of Tarkarli & Devbagh.**
- 🌴 **Near to an estuary where river meets the sea.**
- 🌴 **Sindhudurg fort, Beaches full of Dolphins, Water Sports, Snorkelling & Scuba Diving are added attraction nearby.**
- 🌴 **Sea world project coming up in vicinity at Tondavalli**
- 🌴 **Adjacent to proposed sports & swimming pool complex**
- 🌴 **New domestic airport coming up in vicinity at Chipi 18 KM. away.**
- 🌴 **Very soon to be connected by seaplane with Mumbai**
- 🌴 **Upcoming Mopa International Airport (Goa) just 75 KM. away.**

Artist Impression of 1 BHK  
1 BHK (A-Type)



Artist Impression of 1 BHK  
1 BHK (B-Type)





Artist Impression of 2 BHK (A-Type)



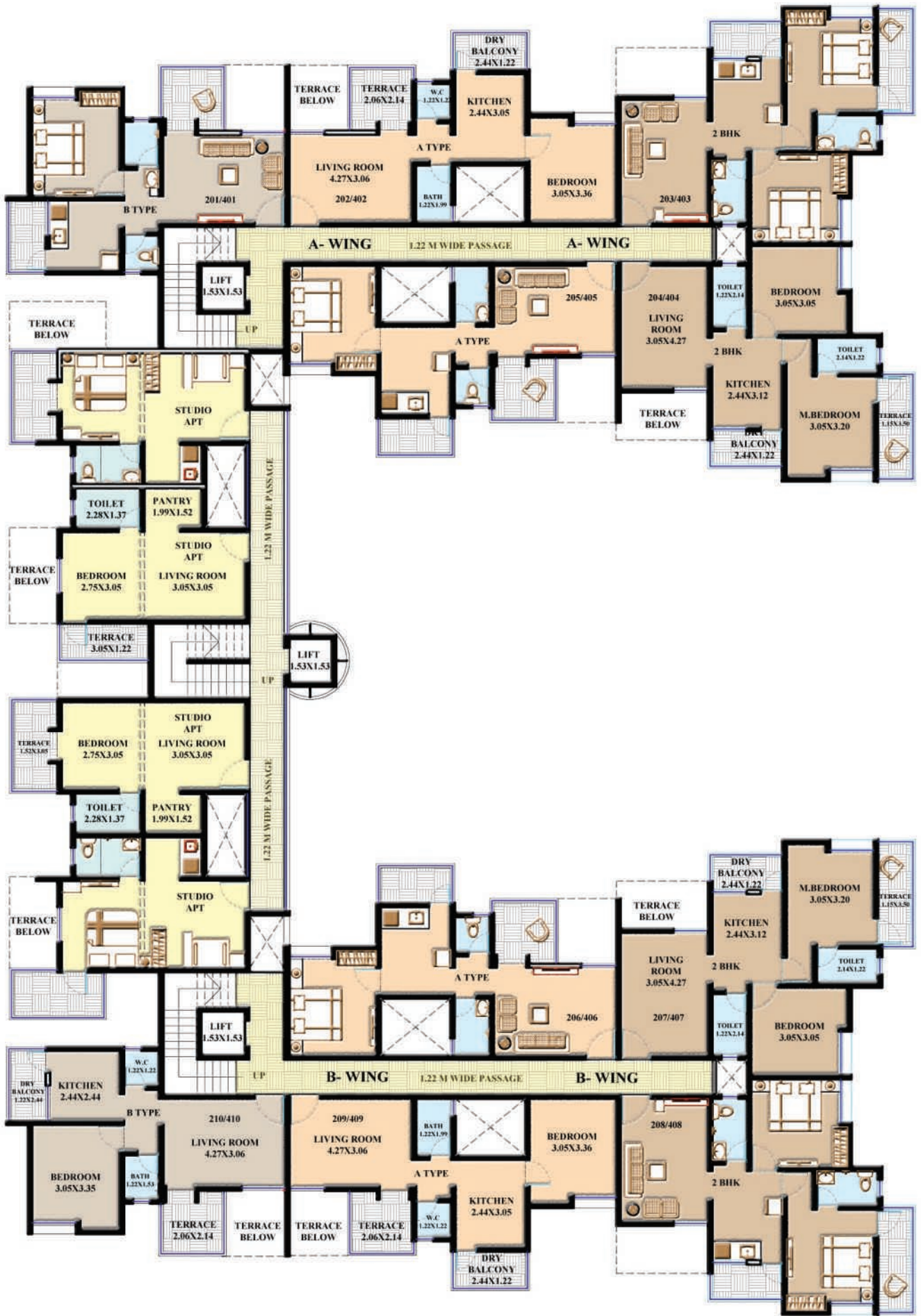
Roof Plan



First & Third Floor Plan







Second & Fourth Floor Plan



# Best Amenities for your better living...



## STRUCTURE

- Earthquake Resistant R.C.C. frame structure
- Smooth gypsum finished plaster internally & double coat sand faced cement plaster externally



## BATHROOM/ TOILET

- Deluxe C.P. fittings
- Provision for exhaust fan in each toilet
- 12 x16 Designer tiles up to lintel in all toilet
- Wash basin in master bedroom toilet
- Hot & cold mixer management



## FLOORING & WALL FINISH

- 24" x 24" Vitrified designer tiles for entire flat with skirting
- Anti skid tiles in balcony & toilet
- Oil Bond Distemper paints for internal wall
- Cement paint / APEX paints for external wall



## KITCHEN

- Granite kitchen platform with S.S. sink
- 12 x16 designer wall tiles for dado up to window lintel level
- Provision for exhaust fan in kitchen
- Provision for Water Purifier



## DOORS/ WINDOW

### Doors:

- Wide wooden door frames  
Flush doors with laminate on both sides
- SS finish fitting for main door
- SS finish cylindrical lock for internal doors

### Window:

- Large windows for better ventilation & view
- Powder coated aluminium sliding windows with mosquito mesh
- MS grills for windows
- Green marble stone window sill



## PHONE , TV & INTERNET

- Telephone points in living room  
TV / cable points in living room



## ELECTRIC POINTS

- Provision for Air Conditioner for master bedroom & living bedroom
- Concealed copper wiring with modular switches
- Fire resistant cabling
- Inverter back-up for light & fan point in flat



## ELEVATORS

- P.W.D. approved lift
- Power Back-up for lift



## ENTRANCE LOBBY

- Well decorated entrance lobby



## PERIPHERAL ROADS & PARKING

- Well-illuminated internal roads in paving block / cement concrete
- Covered parking area with checkered tile flooring



## GARDEN & LANDSCAPING

- Professionally designed landscaping
- Children's play park with play equipments
- Temple



## SECURITY

- Security cabin
- Intercom connection to every flat
- Video door phone per flat
- Multi Apartment Video Door Phone
- Finger Print Lock For Main Door
- 24 X 7 Security Systems ( C.C. Tv Camera)
- Gas leakage detectors

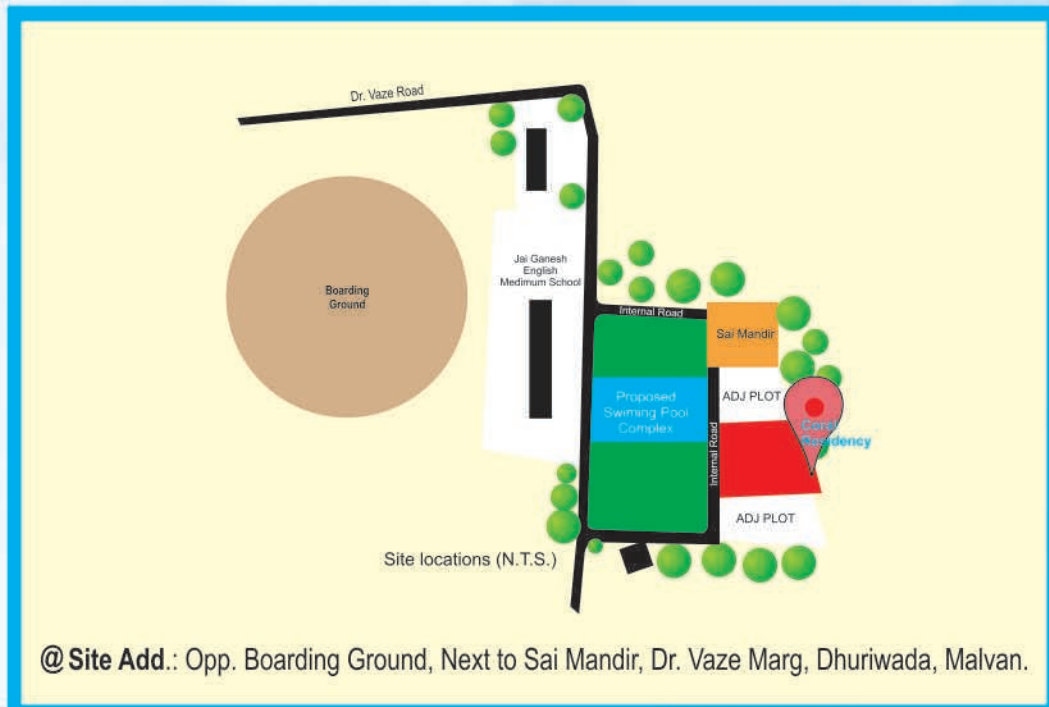
## SPECIAL FEATURE

- Solar water connection in bathroom / toilet
- Rain water harvesting
- Cable TV connection (Tata Sky or equivalent)
- Inverter back-up for common staircase lighting
- Automatic Level Controller for Underground & Overhead Water tank

## CREDITS

**Architect** : Jay Aeram & Associates, Pune **R.C.C. Consultant** : Mr. Ajay Shinde Ratnadeep Consultants Kolhapure  
**Legal Advisor** : Adv. Ulhas Kulkarni, Malvan. **Conceptual Designing & landscaping** : M/s Saanvi Studios





## Mumbai Office :

Flat No. 103, 1<sup>st</sup> Floor, Choudhariwadi Society, Plot No. 352,  
Choudhariwadi, Opp. Jain Tower, R.S.K. Bole Rd. Dadar (W),  
Mumbai - 400 028, INDIA. **Landline** : +91-22-24316783 / 84

## Pune Office :

1, Shree Raj Villa, Survey No. 78, 128 Bhusari Colony, Kothrud,  
Pune - 411038, INDIA. **Landline** : +91-20-25286766

## Malvan Office:

Contact - Mr. Krishna : +91 7387083211

**Email** : [contact@saanvigroups.com](mailto:contact@saanvigroups.com) **Website** : [www.saanvigroups.com](http://www.saanvigroups.com)



**Note** : The Contents of this brochure are purely conceptual & have no legal binding on us. The developers reserve the right to amend the layouts, plan number of floors, elevation, color scheme, specification and amenities etc.